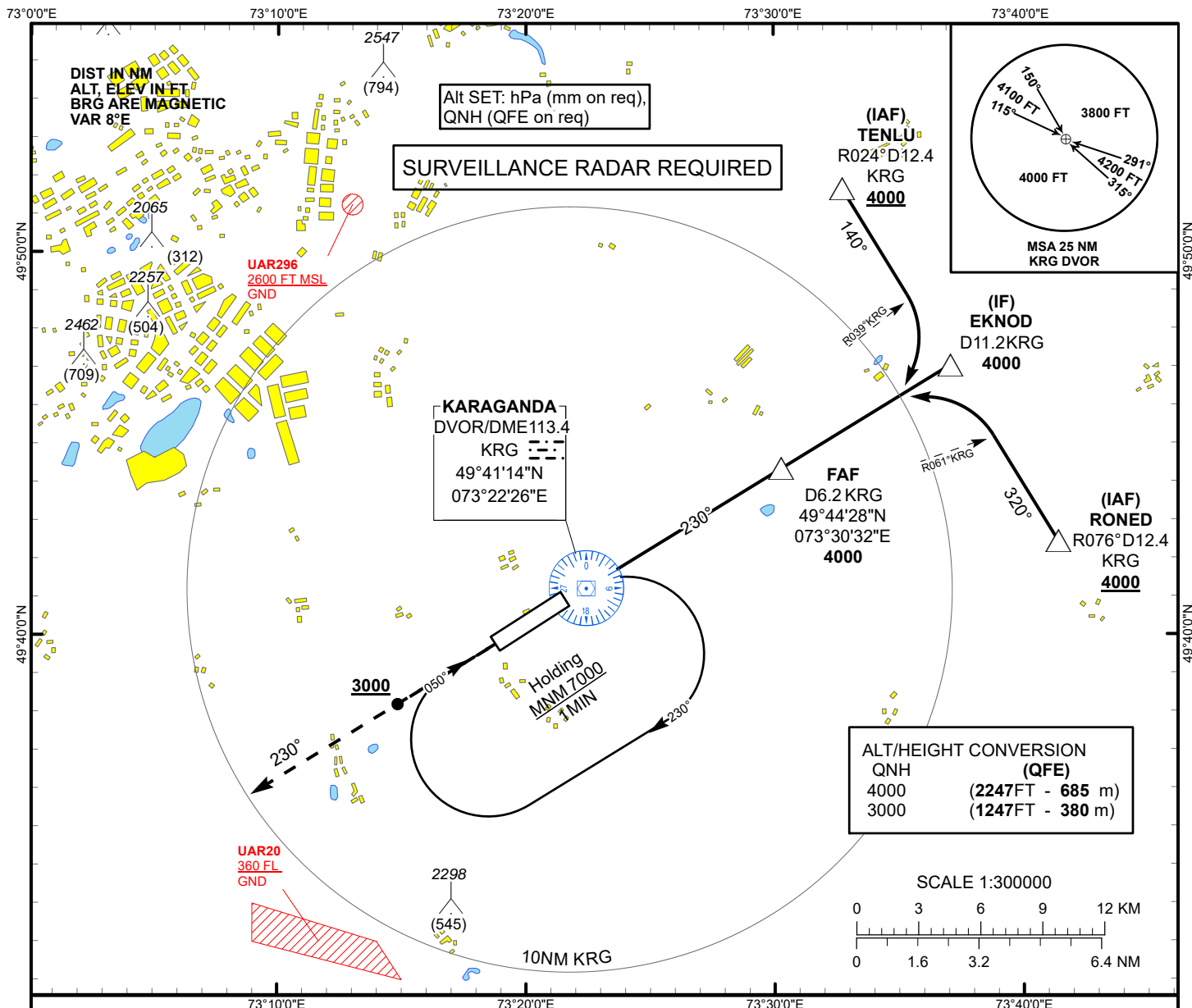


INSTRUMENT APPROACH  
CHART  
ICAO

AERODROME ELEV 1766 FT  
HEIGHTS RELATED TO  
THR RWY 23 - ELEV 1753 FT

KARAGANDA TOWER 122.0  
KARAGANDA ATIS (EN) 135.8  
KARAGANDA ATIS (RU) 127.8

KARAGANDA  
VOR/DME Y  
RWY 23



MISSED APPROACH

Climb on track 230° to 4000 ft,  
After passing 3000 ft radar  
vectoring will be provided.

TRANSITION ALT  
10000

MAPt  
DVOR/DME  
KRG

PDG 5.2% (3.0°)

THR RWY 23  
ELEV 1753

FAF  
D6.2 KRG  
4000

IF  
EKNOD  
D11.2 KRG  
4000

Aircraft Category		A	B	C	D	DIST to THR	NM	7	6	5	4	3	2	1
Straight-in Approach OCA/H						DME KRG	NM	6.2	5.2	4.2	3.2	2.2	1.2	0.2
	VOR/DME	2080(330)	2080(330)	2080(330)	2080(330)	ALTITUDE	FT	4000	3713	3394	3076	2757	2439	2121
						HEIGHT	FT	(2247)	(1960)	(1641)	(1323)	(1004)	(686)	(368)
Aerodrome Operating Minima MDH ft x RVR(CMV)	VOR/DME					GS	Kt	80	100	120	140	160	180	
						Desc.Rate( 5.2%)	ft/min	420	530	630	740	840	950	
						FAF-MAPt(6.2NM)	min:sec	4:39	3:43	3:06	2:39	2:20	2:04	

KARAGANDA  
VOR/DME Y

AERONAUTICAL DATA TABULATION

VOR approach to RWY23 from TENLU, EKNOD, RONE	
Fix/point	Coordinates
(FAF) D6.2 KRG	49°44'27.6"N 073°30'32.3"E
EKNOD (IF) D11.2 KRG	49°47'02.9"N 073°37'07.1"E
TENLU (IAF) R024° D12.4 KRG	49°51'39.2"N 073°32'46.3"E
RONE (IAF) R076° D12.4 KRG	49°42'26.4"N 073°41'27.1"E
THR RWY23	49°40'49.44"N 073°21'24.50"E
DVOR/DME KRG	49°41'13.9"N 073°22'25.7"E
Final approach descent angle is 3°	